

120 York Street
Kennebunk, ME 04043
(207) 467-3478

NELSON ANALYTICAL LAB



ISO 17025:2017 Accreditation
ANAB Certificate Number: AT-2169
Maine CDC Accreditation MTF001
Office of Marijuana Policy MTF328

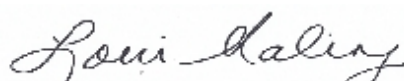
Report Date: 28 May 2021

Stoner & Co.:
414 Hill St. Biddeford ME , 04046:

Enclosed are the results of analytical testing performed on the following samples:

Laboratory ID	Sample Location	Date sampled	Date received
C21050414.01	Lemon Pepper CBD Cure All Batch #0001A	21-May-21 00:00	21-May-21 16:55
C21050414.02	Ginger Lime Cure All Batch #0002A	21-May-21 00:00	21-May-21 16:55
C21050414.03	Plain Milk Bar :1 Batch #0003A	21-May-21 00:00	21-May-21 16:55
C21050414.04	Cookies And Cream Bites Batch # 0004A	21-May-21 00:00	21-May-21 16:55

If you have any questions concerning this report, please feel free to contact the laboratory at 207-467-3478.



Lorri Maling
Laboratory Director



120 York Street
Kennebunk, ME 04046
(207) 467-3478

NELSON ANALYTICAL LAB



RP210528064

ISO 17025:2017 Certification
ANAB Certificate Number AT-2169
Maine CDC Accreditation # MTF001
Office of Marijuana Policy MTF328

Amount Received:

REPORT OF ANALYSIS

Stoner & Co.

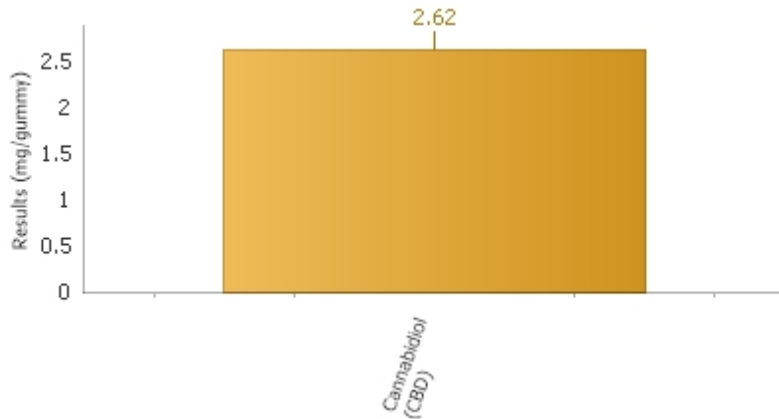
C21050414.01

Lemon Pepper CBD Cure All Batch #0001A(Edible)

Date sampled : 05/21/2021

Reported Date: 05/28/2021

Temp Received:



Cannabinoids by HPLC

Analyte	Result	Reporting Limit	Units	Q	Analyzed	Method	Analyst	Pass/Fail Limit	Test Remarks
Cannabidiarin (CBDV)	ND	0.5	mg/gummy		05/24/2021 12:31	HPLC SOP-7	NRS	N/A	
Cannabidiolic acid (CBDA)	ND	0.5	mg/gummy		05/24/2021 12:31	HPLC SOP-7	NRS	N/A	
Cannabigerolic acid (CBGA)	ND	0.5	mg/gummy		05/24/2021 12:31	HPLC SOP-7	NRS	N/A	
Cannabigerol (CBG)	ND	0.5	mg/gummy		05/24/2021 12:31	HPLC SOP-7	NRS	N/A	
Cannabidiol (CBD)	2.62	0.5	mg/gummy		05/24/2021 12:31	HPLC SOP-7	NRS	N/A	
Tetrahydrocannabivarin (THCV)	ND	0.5	mg/gummy		05/24/2021 12:31	HPLC SOP-7	NRS	N/A	
Cannabinol (CBN)	ND	0.5	mg/gummy		05/24/2021 12:31	HPLC SOP-7	NRS	N/A	
Delta-9-THC	ND	0.5	mg/gummy		05/24/2021 12:31	HPLC SOP-7	NRS	N/A	
Delta-8-THC	ND	0.5	mg/gummy		05/24/2021 12:31	HPLC SOP-7	NRS	N/A	
Cannabichromene (CBC)	ND	0.5	mg/gummy		05/24/2021 12:31	HPLC SOP-7	NRS	N/A	
THCA-A	ND	0.5	mg/gummy		05/24/2021 12:31	HPLC SOP-7	NRS	N/A	

Total Cannabinoids by HPLC (Calculated)

Analyte	Result	Reporting Limit	Units	Q	Analyzed	Method	Analyst	Pass/Fail Limit	Test Remarks
CBD+CBDA- Calculated	2.62	0.5	mg/gummy		05/24/2021 12:31	HPLC SOP-7	NRS	N/A	
Total CBD-(Max CBD) Calculated	2.62	0.5	mg/gummy		05/24/2021 12:31	HPLC SOP-7	NRS	N/A	
THC+THCA- Calculated	ND	0.5	mg/gummy		05/24/2021 12:31	HPLC SOP-7	NRS	N/A	
Total THC-(Max THC) Calculated	ND	0.5	mg/gummy		05/24/2021 12:31	HPLC SOP-7	NRS	N/A	
Total Cannabinoids- Calculated	2.62	0.5	mg/gummy		05/24/2021 12:31	HPLC SOP-7	NRS	N/A	
Weight of edible submitted	2.8758		g		05/24/2021 12:31	HPLC SOP-7	NRS	N/A	

Results as reported above relate only to samples as submitted, unless specifically noted otherwise.

120 York Street
Kennebunk, ME 04046
(207) 467-3478

NELSON ANALYTICAL LAB



RP210528064

ISO 17025:2017 Certification
ANAB Certificate Number AT-2169
Maine CDC Accreditation # MTF001
Office of Marijuana Policy MTF328

Amount Received:

REPORT OF ANALYSIS

Stoner & Co.

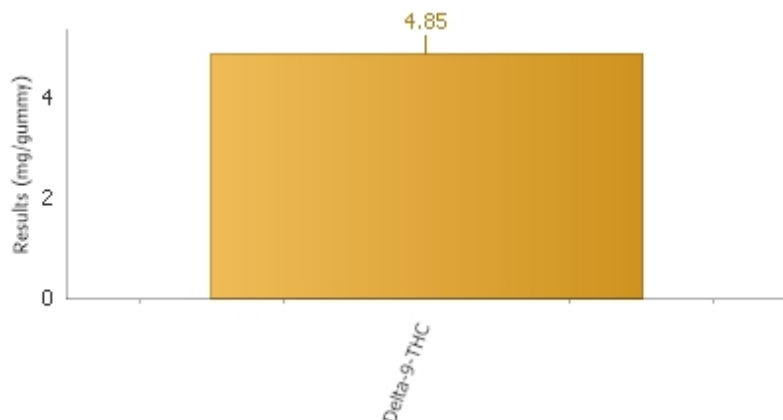
C21050414.02

Ginger Lime Cure All Batch #0002A(Edible)

Date sampled : 05/21/2021

Reported Date: 05/28/2021

Temp Received:



Cannabinoids by HPLC

Analyte	Result	Reporting Limit	Units	Q	Analyzed	Method	Analyst	Pass/Fail Limit	Test Remarks
Cannabidiarin (CBDV)	ND	0.5	mg/gummy		05/24/2021 12:52	HPLC SOP-7	NRS	N/A	
Cannabidiolic acid (CBDA)	ND	0.5	mg/gummy		05/24/2021 12:52	HPLC SOP-7	NRS	N/A	
Cannabigerolic acid (CBGA)	ND	0.5	mg/gummy		05/24/2021 12:52	HPLC SOP-7	NRS	N/A	
Cannabigerol (CBG)	ND	0.5	mg/gummy		05/24/2021 12:52	HPLC SOP-7	NRS	N/A	
Cannabidiol (CBD)	ND	0.5	mg/gummy		05/24/2021 12:52	HPLC SOP-7	NRS	N/A	
Tetrahydrocannabivarin (THCV)	ND	0.5	mg/gummy		05/24/2021 12:52	HPLC SOP-7	NRS	N/A	
Cannabinol (CBN)	ND	0.5	mg/gummy		05/24/2021 12:52	HPLC SOP-7	NRS	N/A	
Delta-9-THC	4.85	0.5	mg/gummy		05/24/2021 12:52	HPLC SOP-7	NRS	N/A	
Delta-8-THC	ND	0.5	mg/gummy		05/24/2021 12:52	HPLC SOP-7	NRS	N/A	
Cannabichromene (CBC)	ND	0.5	mg/gummy		05/24/2021 12:52	HPLC SOP-7	NRS	N/A	
THCA-A	ND	0.5	mg/gummy		05/24/2021 12:52	HPLC SOP-7	NRS	N/A	

Total Cannabinoids by HPLC (Calculated)

Analyte	Result	Reporting Limit	Units	Q	Analyzed	Method	Analyst	Pass/Fail Limit	Test Remarks
CBD+CBDA- Calculated	ND	0.5	mg/gummy		05/24/2021 12:52	HPLC SOP-7	NRS	N/A	
Total CBD-(Max CBD) Calculated	ND	0.5	mg/gummy		05/24/2021 12:52	HPLC SOP-7	NRS	N/A	
THC+THCA- Calculated	4.85	0.5	mg/gummy		05/24/2021 12:52	HPLC SOP-7	NRS	N/A	
Total THC-(Max THC) Calculated	4.85	0.5	mg/gummy		05/24/2021 12:52	HPLC SOP-7	NRS	N/A	
Total Cannabinoids- Calculated	4.85	0.5	mg/gummy		05/24/2021 12:52	HPLC SOP-7	NRS	N/A	
Weight of edible submitted	2.8544		g		05/24/2021 12:52	HPLC SOP-7	NRS	N/A	

Results as reported above relate only to samples as submitted, unless specifically noted otherwise.

NELSON ANALYTICAL LAB

120 York Street
Kennebunk, ME 04046
(207) 467-3478

ISO 17025:2017 Certification
ANAB Certificate Number AT-2169
Maine CDC Accreditation # MTF001
Office of Marijuana Policy MTF328

Amount Received:

REPORT OF ANALYSIS

Stoner & Co.

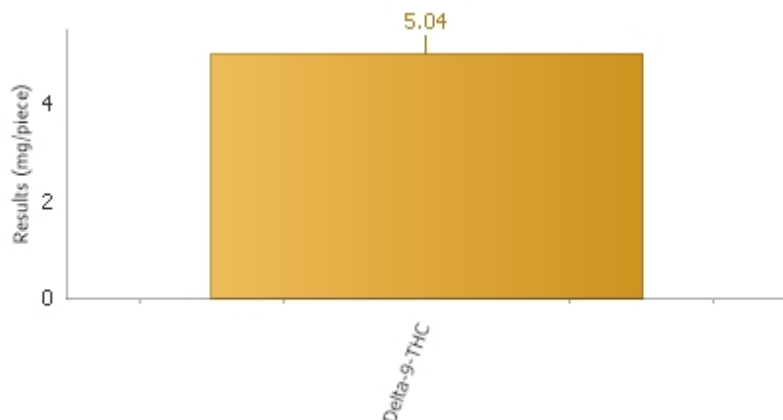
C21050414.04

Cookies And Cream Bites Batch # 0004A(Edible)

Date sampled : 05/21/2021

Reported Date: 05/28/2021

Temp Received:



Cannabinoids by HPLC

Analyte	Result	Reporting Limit	Units	Q	Analyzed	Method	Analyst	Pass/Fail Limit	Test Remarks
Cannabidiarin (CBDV)	ND	0.5	mg/piece		05/24/2021 13:33	HPLC SOP-7	NRS	N/A	
Cannabidiolic acid (CBDA)	ND	0.5	mg/piece		05/24/2021 13:33	HPLC SOP-7	NRS	N/A	
Cannabigerolic acid (CBGA)	ND	0.5	mg/piece		05/24/2021 13:33	HPLC SOP-7	NRS	N/A	
Cannabigerol (CBG)	ND	0.5	mg/piece		05/24/2021 13:33	HPLC SOP-7	NRS	N/A	
Cannabidiol (CBD)	ND	0.5	mg/piece		05/24/2021 13:33	HPLC SOP-7	NRS	N/A	
Tetrahydrocannabivarin (THCV)	ND	0.5	mg/piece		05/24/2021 13:33	HPLC SOP-7	NRS	N/A	
Cannabinol (CBN)	ND	0.5	mg/piece		05/24/2021 13:33	HPLC SOP-7	NRS	N/A	
Delta-9-THC	5.04	0.5	mg/piece		05/24/2021 13:33	HPLC SOP-7	NRS	N/A	
Delta-8-THC	ND	0.5	mg/piece		05/24/2021 13:33	HPLC SOP-7	NRS	N/A	
Cannabichromene (CBC)	ND	0.5	mg/piece		05/24/2021 13:33	HPLC SOP-7	NRS	N/A	
THCA-A	ND	0.5	mg/piece		05/24/2021 13:33	HPLC SOP-7	NRS	N/A	

Total Cannabinoids by HPLC (Calculated)

Analyte	Result	Reporting Limit	Units	Q	Analyzed	Method	Analyst	Pass/Fail Limit	Test Remarks
CBD+CBDA- Calculated	ND	0.5	mg/piece		05/24/2021 13:33	HPLC SOP-7	NRS	N/A	
Total CBD-(Max CBD) Calculated	ND	0.5	mg/piece		05/24/2021 13:33	HPLC SOP-7	NRS	N/A	
THC+THCA- Calculated	5.04	0.5	mg/piece		05/24/2021 13:33	HPLC SOP-7	NRS	N/A	
Total THC-(Max THC) Calculated	5.04	0.5	mg/piece		05/24/2021 13:33	HPLC SOP-7	NRS	N/A	
Total Cannabinoids- Calculated	5.04	0.5	mg/piece		05/24/2021 13:33	HPLC SOP-7	NRS	N/A	
Weight of edible submitted	3.4444		g		05/24/2021 13:33	HPLC SOP-7	NRS	N/A	

Results as reported above relate only to samples as submitted, unless specifically noted otherwise.

120 York Street
Kennebunk, ME 04043
(207)467-3478 or (207)618-9333

ANAB Certificate Number: AT-2169

www.Testedlabs.com

Notes and Definitions

Note: All sample results are based on samples as they are received. Not all potential/existing hazards were tested. Unless otherwise noted below, analyses were performed without significant modifications and QC met the quality standards outlined in the methods reported. For purposes of reporting the terms marijuana and cannabis are used interchangeably. The Pass/Fail column on the report references Maine Adult Use acceptance limits. The State of Maine does not require Medical Marijuana or Hemp to meet these acceptance limits currently.

Results for the Maine Adult Use program are entered into the Metrc system. Due to reporting requirements some results are entered in Metrc as Zero. This is not scientifically accurate. Please refer to the final pdf report for the accurate reporting information. The Total THC number listed on the report may not be the same number listed in the Metrc system. Delta 8, if found in the sample, is not reported in Metrc or as part on the Total THC in Metrc.

Heat activation of cannabis products converts THCA to THC and CBDA to CBD in a time and temperature dependent manner. This conversion is known as decarboxylation and results from the loss of CO₂ during heating.

Total THC (Max THC) = Delta 8 THC + Delta 9 THC + (THCA x 0.877)

Total CBD (Max CBD) = CBD + (CBDA x 0.880)

Nelson Analytical is accredited for testing by ISO/IEC 17025:2017 and certified by ME CDC for the following parameters only:

Cannabinoids: Cannabinol (CBN), Cannabidiol (CBD)*, Cannabidiolic Acid (CBDA)*, Cannabigerol (CBG), Cannabigerolic Acid (CBGA), Cannabichromene (CBC), delta-9-THC*, delta-8-THC, THCA-A*, Tetrahydrocannabivarin (THCV), Cannabidivarin (CBDV) by High Pressure Liquid Chromatography (HPLC). Internal SOP-1/SOP-7 Analysis of Cannabinoids *NOTE: ME CDC certification for CBD, CBDA, Delta 9 THC and THCA-A, Total THC and Total CBD.

Homogeneity (Internal SOP-1/SOP-7 Analysis of Cannabinoids)

Visual Inspection - Foreign Material Testing (Internal SOP-24-Visual Inspection)

% Moisture (Loss on drying) (Internal SOP 59 - % Moisture)

Metals Preparation and Analysis: Arsenic, Cadmium, Lead and Mercury (SOP-17- ICP MS based on EPA 200.8)

Mycotoxins: Total Aflatoxin and Ochratoxin by ELISA - Internal SOP-4 Total Aflatoxin and Ochratoxin

Yeast and Mold (based on AOAC Method 997.02/2014.05), Total Coliform and E. coli (based on AOAC Method 991.14) E. Coli P/A (based on AOAC 991.14 Modified with enrichment before plating), Aerobic Plate Count (based on AOAC Method 990.12), Enterobacteriaceae (based on OMA 2003.01), Salmonella (based on AOAC 2014.01) SOP-3-Microbiological analysis by Petri Film.

Water Activity (SOP-53-Water Activity-based on ASTM D81918)

< or ND - Analyte result not detected above the method reporting limit

All sample results are reported on an "as received" basis.

Edibles are reported in mg/serving. The serving size is defined by the customer for Adult Use testing.

If the serving size is not defined by the customer (for R&D or Medical testing), the number reported is based on the weight of one unit of the product or as defined on the customer label.

The mg/serving reported are based on weights of the serving size taken at the laboratory. The mg/package results reported are based on information supplied by the customer.

Edible conversion calculation: mg/g in serving x weight of serving = mg per serving

Mg/package conversion: mg/serving x servings per package = mg/package

Laboratory uncertainty is calculated and updated on a regular basis.

The uncertainty calculated for edibles is applied to the Total THC results for Maine Adult use marijuana products. The uncertainty value currently in use is 10 mg per serving +/- 0.5 mg/serving based on uncertainty data calculated through August 2020.

The uncertainty calculated for Total THC in hemp is 0.30% +/- 0.05%. The uncertainty is based on data calculated through August 2020.

Samples are extracted and analyzed on the same day unless otherwise noted.

Cannabinoid and Terpene Analysis are based on laboratory developed methods. All other test methods are based on established EPA, USP or FDA methods.

Matrix matched quality control check samples for marijuana are available for microbiological analysis in a hemp-based QC. Other matrix matched quality control samples for most matrices may be available for hemp but do not currently exist in marijuana. Due to this unavailability, even ISO/IEC validated methods cannot be fully verified for the efficiency and accuracy of the marijuana extraction and analysis in any current Maine Testing facility.

To convert mg/ml to a % percentage move the decimal place one to the left.

Results as reported above relate only to samples as submitted, unless specifically noted otherwise.

Medical Marijuana and Hemp are not currently regulated in the State of Maine. For your reference, the limits listed in the rules for Maine Adult Use Testing as specified by the Maine Office of Marijuana Policy testing are listed below.

Water Activity and Moisture Content

If the water activity in a dried flower production batch sample is at or below, 0.65 A_w , the sample will be designated with “pass”. If the water activity in a dried flower production batch sample greater than 0.65 A_w , the sample will be designated with “fail”.

If the water activity in solid and semi-solid edible marijuana products that do not require additional preservation (e.g. refrigeration) is at, or below, 0.85 A_w , the sample will be designated with “pass”. If the water activity is greater than 0.85 A_w , the sample will be designated as “fail”.

Visual Inspection for Filth and Foreign Material

The samples shall not pass if any living or dead insect, at any life cycle stage; one hair; or one count of mammalian excreta is found or if one fourth of the total area is covered by mold, sand, soil, cinders, dirt or imbedded foreign material.

Homogeneity of cannabinoids

Total THC and, if applicable, Total CBD values between samples must not vary by more than 15% or the product fails testing.

THC per serving and per package

The concentration in any marijuana product may not exceed 10 milligrams per serving of THC.

The concentration in any marijuana may not exceed 100 milligrams per package of Total THC.

Microbiological Contaminants in CFU/g

Marijuana Material	Total Viable Aerobic Bacteria	Total Yeast and Mold	Total Coliform Bacteria	Enterobacteriaceae	E. coli and Salmonella (spp.)
Unprocessed and Processed Plant Material and Marijuana Products	100,000	10,000	1000	1000	<1/g sample (pass)
CO ₂ and Solvent-Based Extracts	10,000	1000	100	100	<1/g sample (pass)

Heavy Metals testing

Note: Heavy Metals tests are not included in the required analysis at this time. The limits below are listed for reference if voluntary testing is performed.

Heavy Metal	Inhalation	Ingestion or Suppository	Topical Application
Cadmium (Cd)	200 ug/kg	500 ug/kg	5000 ug/kg
Lead (Pb)	500 ug/kg	500 ug/kg	10,000 ug/kg
Arsenic (As)	200 ug/kg	1500 ug/kg	1000 ug/kg
Mercury (Hg)	100 ug/kg	3000 ug/kg	1000 ug/kg

Note: Residual Solvent and Pesticide limits are listed in the Adult Use testing rule from the Office of Marijuana Policy. These tests are not included in the required analysis at this time.

QUALIFIER DEFINITION

NELSON ANALYTICAL LAB

120 York Street, Kennebunk, ME 04043

www.nelsonanalytical.com

(207)467-3478 phone

REPORT OF ANALYSIS

Laboratory ID: C21050414

NH ELAP Accreditation #NH2018

Maine State Certification # ME00015

Maine Radon Certification # ME17500

Qualifier Definition



Notes: mg/L=ppm; ug/L=ppb; ng/L=ppt; "<" denotes "less than". This report of analysis may not be modified in any way, or reproduced except in full, without written approval from Nelson Analytical, LLC. Results reported above relate only to samples as submitted, unless specifically noted otherwise. Nelson Analytical, LLC is currently accredited by the New Hampshire Environmental Lab Accreditation Program, ANAB, and the Maine Laboratory Accreditation Program. For a list of current accredited tests, please visit the websites listed below. Sampling performed by the lab is according to the lab document "Water Sampling Instructions". EPA standards list pH & Chlorine as field parameters which should be tested immediately upon sample collection. Samples tested for pH after submission are beyond the hold time. Samples will be analyzed as quickly as laboratory operations allow. Metals samples preserved and analyzed on the same day do not meet the method criteria. #=Sample(s) received at laboratory do not meet method specified temperature criteria.

Subcontract Laboratories: SUB1: Nelson Analytical Manchester (NH1005) ME-NH01005 SUB 2: (NH 2136) (ME-CT00007), SUB3: (NH2001) (ME00019), SUB 4: NH2073 SUB5: (NH2530) (ME FL00117), SUB7: EAI Analytical (NH 1007), SUB 8: ME00002 SUB9: (NH2516) (MA00100)

<http://des.nh.gov/organization/divisions/water/dwgb/nhelap/>
<https://www.maine.gov/dhhs/mecdc/environmental-health/dwp/professionals/labCert.shtml>
http://search.anab.org/public/organization_files/Tested-LabsNelson-Analytical-Cert-and-Scope-File-08-13-2019_1565710045.pdf

Date: 05/28/2021 15:25

120 York Street
 Kennebunk, ME 04043
 (207) 467-3478

NELSON ANALYTICAL LAB



ISO 17025:2017 Accreditation
 ANAB Certificate Number: AT-2169
 Maine CDC Accreditation MTF001
 Office of Marijuana Policy MTF328

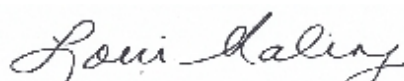
Report Date: 28 May 2021

Stoner & Co.:
 414 Hill St. Biddeford ME , 04046:

Enclosed are the results of analytical testing performed on the following samples:

Laboratory ID	Sample Location	Date sampled	Date received
C21050452.02	Batch - 0006A - Plain Dark Chocolate Bar	25-May-21 00:00	25-May-21 16:50
C21050452.03	Batch - 0007A - Blueberry Dark Bar	25-May-21 00:00	25-May-21 16:50
C21050452.04	Batch - 0008A - Blueberry Bite	25-May-21 00:00	25-May-21 16:50
C21050452.05	Batch - 0009A - Plain Dark Bite	25-May-21 00:00	25-May-21 16:50
C21050452.06	Batch - 0005A - Milk Chai Truffle	25-May-21 00:00	25-May-21 16:50

If you have any questions concerning this report, please feel free to contact the laboratory at 207-467-3478.



Lorri Maling
 Laboratory Director



NELSON ANALYTICAL LAB

120 York Street
Kennebunk, ME 04046
(207) 467-3478

ISO 17025:2017 Certification
ANAB Certificate Number AT-2169
Maine CDC Accreditation # MTF001
Office of Marijuana Policy MTF328

Amount Received:

REPORT OF ANALYSIS

Stoner & Co.

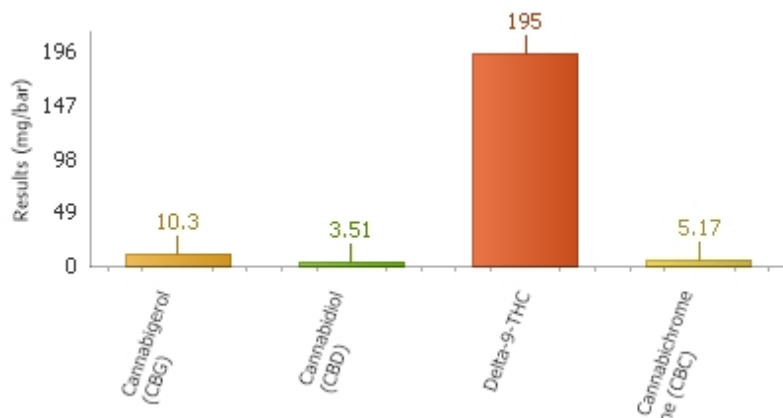
C21050452.02

Batch - 0006A - Plain Dark Chocolate Bar(Edible)

Date sampled : 05/25/2021

Reported Date: 05/28/2021

Temp Received:



Cannabinoids by HPLC

Analyte	Result	Reporting Limit	Units	Q	Analyzed	Method	Analyst	Pass/Fail Limit	Test Remarks
Cannabidivarin (CBDV)	ND	0.5	mg/bar		05/26/2021 17:35	HPLC SOP-7	NRS	N/A	
Cannabidiolic acid (CBDA)	ND	0.5	mg/bar		05/26/2021 17:35	HPLC SOP-7	NRS	N/A	
Cannabigerolic acid (CBGA)	ND	0.5	mg/bar		05/26/2021 17:35	HPLC SOP-7	NRS	N/A	
Cannabigerol (CBG)	10.3	0.5	mg/bar		05/26/2021 17:35	HPLC SOP-7	NRS	N/A	
Cannabidiol (CBD)	3.51	0.5	mg/bar		05/26/2021 17:35	HPLC SOP-7	NRS	N/A	
Tetrahydrocannabivarin (THCV)	ND	0.5	mg/bar		05/26/2021 17:35	HPLC SOP-7	NRS	N/A	
Cannabinol (CBN)	ND	0.5	mg/bar		05/26/2021 17:35	HPLC SOP-7	NRS	N/A	
Delta-9-THC	195	0.5	mg/bar		05/26/2021 17:35	HPLC SOP-7	NRS	N/A	
Delta-8-THC	ND	0.5	mg/bar		05/26/2021 17:35	HPLC SOP-7	NRS	N/A	
Cannabichromene (CBC)	5.17	0.5	mg/bar		05/26/2021 17:35	HPLC SOP-7	NRS	N/A	
THCA-A	ND	0.5	mg/bar		05/26/2021 17:35	HPLC SOP-7	NRS	N/A	

Total Cannabinoids by HPLC (Calculated)

Analyte	Result	Reporting Limit	Units	Q	Analyzed	Method	Analyst	Pass/Fail Limit	Test Remarks
CBD+CBDA- Calculated	3.51	0.5	mg/bar		05/26/2021 17:35	HPLC SOP-7	NRS	N/A	
Total CBD-(Max CBD) Calculated	3.51	0.5	mg/bar		05/26/2021 17:35	HPLC SOP-7	NRS	N/A	
THC+THCA- Calculated	195	0.5	mg/bar		05/26/2021 17:35	HPLC SOP-7	NRS	N/A	
Total THC-(Max THC) Calculated	195	0.5	mg/bar		05/26/2021 17:35	HPLC SOP-7	NRS	N/A	
Total Cannabinoids- Calculated	214	0.5	mg/bar		05/26/2021 17:35	HPLC SOP-7	NRS	N/A	
Weight of edible submitted	46.9075		g		05/26/2021 17:35	HPLC SOP-7	NRS	N/A	

Results as reported above relate only to samples as submitted, unless specifically noted otherwise.

NELSON ANALYTICAL LAB

120 York Street
Kennebunk, ME 04046
(207) 467-3478

ISO 17025:2017 Certification
ANAB Certificate Number AT-2169
Maine CDC Accreditation # MTF001
Office of Marijuana Policy MTF328

Amount Received:

REPORT OF ANALYSIS

Stoner & Co.

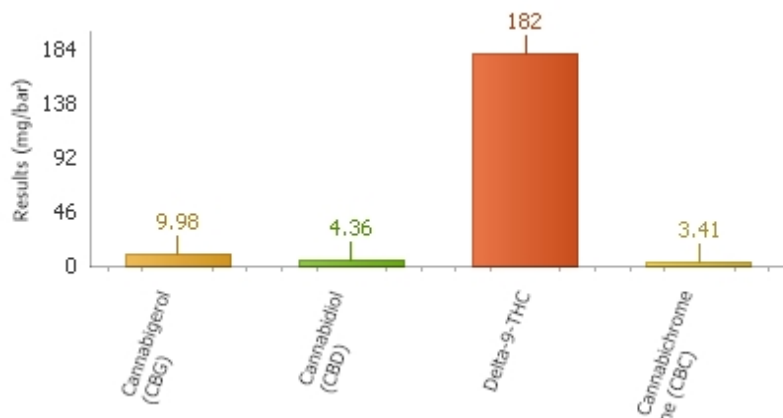
C21050452.03

Batch - 0007A - Blueberry Dark Bar(Edible)

Date sampled : 05/25/2021

Reported Date: 05/28/2021

Temp Received:



Cannabinoids by HPLC

Analyte	Result	Reporting Limit	Units	Q	Analyzed	Method	Analyst	Pass/Fail Limit	Test Remarks
Cannabidiol (CBD)	ND	0.5	mg/bar		05/26/2021 17:56	HPLC SOP-7	NRS	N/A	
Cannabidiolic acid (CBDA)	ND	0.5	mg/bar		05/26/2021 17:56	HPLC SOP-7	NRS	N/A	
Cannabigerolic acid (CBGA)	ND	0.5	mg/bar		05/26/2021 17:56	HPLC SOP-7	NRS	N/A	
Cannabigerol (CBG)	9.98	0.5	mg/bar		05/26/2021 17:56	HPLC SOP-7	NRS	N/A	
Cannabidiol (CBD)	4.36	0.5	mg/bar		05/26/2021 17:56	HPLC SOP-7	NRS	N/A	
Tetrahydrocannabinol (THCV)	ND	0.5	mg/bar		05/26/2021 17:56	HPLC SOP-7	NRS	N/A	
Cannabinol (CBN)	ND	0.5	mg/bar		05/26/2021 17:56	HPLC SOP-7	NRS	N/A	
Delta-9-THC	182	0.5	mg/bar		05/26/2021 17:56	HPLC SOP-7	NRS	N/A	
Delta-8-THC	ND	0.5	mg/bar		05/26/2021 17:56	HPLC SOP-7	NRS	N/A	
Cannabichromene (CBC)	3.41	0.5	mg/bar		05/26/2021 17:56	HPLC SOP-7	NRS	N/A	
THCA-A	ND	0.5	mg/bar		05/26/2021 17:56	HPLC SOP-7	NRS	N/A	

Total Cannabinoids by HPLC (Calculated)

Analyte	Result	Reporting Limit	Units	Q	Analyzed	Method	Analyst	Pass/Fail Limit	Test Remarks
CBD+CBDA- Calculated	4.36	0.5	mg/bar		05/26/2021 17:56	HPLC SOP-7	NRS	N/A	
Total CBD-(Max CBD) Calculated	4.36	0.5	mg/bar		05/26/2021 17:56	HPLC SOP-7	NRS	N/A	
THC+THCA- Calculated	182	0.5	mg/bar		05/26/2021 17:56	HPLC SOP-7	NRS	N/A	
Total THC-(Max THC) Calculated	182	0.5	mg/bar		05/26/2021 17:56	HPLC SOP-7	NRS	N/A	
Total Cannabinoids- Calculated	200	0.5	mg/bar		05/26/2021 17:56	HPLC SOP-7	NRS	N/A	
Weight of edible submitted	49.1530		g		05/26/2021 17:56	HPLC SOP-7	NRS	N/A	

Results as reported above relate only to samples as submitted, unless specifically noted otherwise.

NELSON ANALYTICAL LAB

120 York Street
Kennebunk, ME 04046
(207) 467-3478

ISO 17025:2017 Certification
ANAB Certificate Number AT-2169
Maine CDC Accreditation # MTF001
Office of Marijuana Policy MTF328

Amount Received:

REPORT OF ANALYSIS

Stoner & Co.

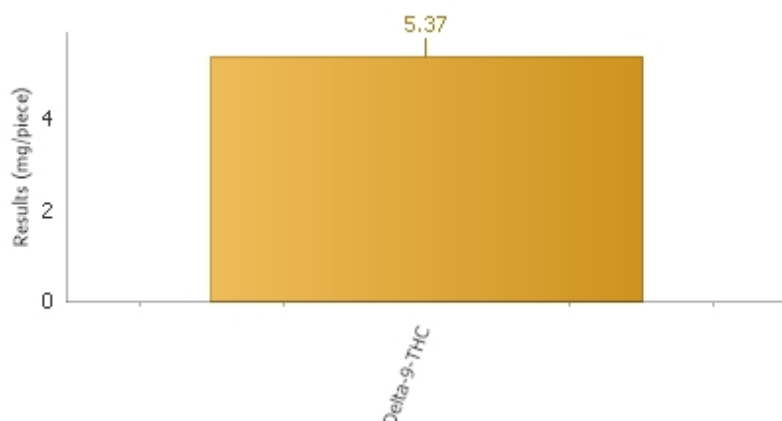
C21050452.04

Batch - 0008A - Blueberry Bite(Edible)

Date sampled : 05/25/2021

Reported Date: 05/28/2021

Temp Received:



Cannabinoids by HPLC

Analyte	Result	Reporting Limit	Units	Q	Analyzed	Method	Analyst	Pass/Fail Limit	Test Remarks
Cannabidiarin (CBDV)	ND	0.5	mg/piece		05/26/2021 18:38	HPLC SOP-7	NRS	N/A	
Cannabidiolic acid (CBDA)	ND	0.5	mg/piece		05/26/2021 18:38	HPLC SOP-7	NRS	N/A	
Cannabigerolic acid (CBGA)	ND	0.5	mg/piece		05/26/2021 18:38	HPLC SOP-7	NRS	N/A	
Cannabigerol (CBG)	ND	0.5	mg/piece		05/26/2021 18:38	HPLC SOP-7	NRS	N/A	
Cannabidiol (CBD)	ND	0.5	mg/piece		05/26/2021 18:38	HPLC SOP-7	NRS	N/A	
Tetrahydrocannabivarin (THCV)	ND	0.5	mg/piece		05/26/2021 18:38	HPLC SOP-7	NRS	N/A	
Cannabinol (CBN)	ND	0.5	mg/piece		05/26/2021 18:38	HPLC SOP-7	NRS	N/A	
Delta-9-THC	5.37	0.5	mg/piece		05/26/2021 18:38	HPLC SOP-7	NRS	N/A	
Delta-8-THC	ND	0.5	mg/piece		05/26/2021 18:38	HPLC SOP-7	NRS	N/A	
Cannabichromene (CBC)	ND	0.5	mg/piece		05/26/2021 18:38	HPLC SOP-7	NRS	N/A	
THCA-A	ND	0.5	mg/piece		05/26/2021 18:38	HPLC SOP-7	NRS	N/A	

Total Cannabinoids by HPLC (Calculated)

Analyte	Result	Reporting Limit	Units	Q	Analyzed	Method	Analyst	Pass/Fail Limit	Test Remarks
CBD+CBDA- Calculated	ND	0.5	mg/piece		05/26/2021 18:38	HPLC SOP-7	NRS	N/A	
Total CBD-(Max CBD) Calculated	ND	0.5	mg/piece		05/26/2021 18:38	HPLC SOP-7	NRS	N/A	
THC+THCA- Calculated	5.37	0.5	mg/piece		05/26/2021 18:38	HPLC SOP-7	NRS	N/A	
Total THC-(Max THC) Calculated	5.37	0.5	mg/piece		05/26/2021 18:38	HPLC SOP-7	NRS	N/A	
Total Cannabinoids- Calculated	5.37	0.5	mg/piece		05/26/2021 18:38	HPLC SOP-7	NRS	N/A	
Weight of edible submitted	3.3002		g		05/26/2021 18:38	HPLC SOP-7	NRS	N/A	

Results as reported above relate only to samples as submitted, unless specifically noted otherwise.

NELSON ANALYTICAL LAB

120 York Street
Kennebunk, ME 04046
(207) 467-3478

ISO 17025:2017 Certification
ANAB Certificate Number AT-2169
Maine CDC Accreditation # MTF001
Office of Marijuana Policy MTF328

Amount Received:

REPORT OF ANALYSIS

Stoner & Co.

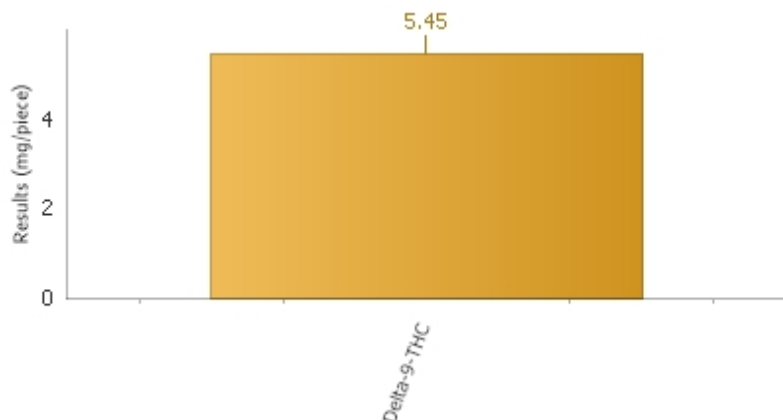
C21050452.05

Batch - 0009A - Plain Dark Bite(Edible)

Date sampled : 05/25/2021

Reported Date: 05/28/2021

Temp Received:



Cannabinoids by HPLC

Analyte	Result	Reporting Limit	Units	Q	Analyzed	Method	Analyst	Pass/Fail Limit	Test Remarks
Cannabidiarin (CBDV)	ND	0.5	mg/piece		05/26/2021 18:59	HPLC SOP-7	NRS	N/A	
Cannabidiolic acid (CBDA)	ND	0.5	mg/piece		05/26/2021 18:59	HPLC SOP-7	NRS	N/A	
Cannabigerolic acid (CBGA)	ND	0.5	mg/piece		05/26/2021 18:59	HPLC SOP-7	NRS	N/A	
Cannabigerol (CBG)	ND	0.5	mg/piece		05/26/2021 18:59	HPLC SOP-7	NRS	N/A	
Cannabidiol (CBD)	ND	0.5	mg/piece		05/26/2021 18:59	HPLC SOP-7	NRS	N/A	
Tetrahydrocannabivarin (THCV)	ND	0.5	mg/piece		05/26/2021 18:59	HPLC SOP-7	NRS	N/A	
Cannabinol (CBN)	ND	0.5	mg/piece		05/26/2021 18:59	HPLC SOP-7	NRS	N/A	
Delta-9-THC	5.45	0.5	mg/piece		05/26/2021 18:59	HPLC SOP-7	NRS	N/A	
Delta-8-THC	ND	0.5	mg/piece		05/26/2021 18:59	HPLC SOP-7	NRS	N/A	
Cannabichromene (CBC)	ND	0.5	mg/piece		05/26/2021 18:59	HPLC SOP-7	NRS	N/A	
THCA-A	ND	0.5	mg/piece		05/26/2021 18:59	HPLC SOP-7	NRS	N/A	

Total Cannabinoids by HPLC (Calculated)

Analyte	Result	Reporting Limit	Units	Q	Analyzed	Method	Analyst	Pass/Fail Limit	Test Remarks
CBD+CBDA- Calculated	ND	0.5	mg/piece		05/26/2021 18:59	HPLC SOP-7	NRS	N/A	
Total CBD-(Max CBD) Calculated	ND	0.5	mg/piece		05/26/2021 18:59	HPLC SOP-7	NRS	N/A	
THC+THCA- Calculated	5.45	0.5	mg/piece		05/26/2021 18:59	HPLC SOP-7	NRS	N/A	
Total THC-(Max THC) Calculated	5.45	0.5	mg/piece		05/26/2021 18:59	HPLC SOP-7	NRS	N/A	
Total Cannabinoids- Calculated	5.45	0.5	mg/piece		05/26/2021 18:59	HPLC SOP-7	NRS	N/A	
Weight of edible submitted	3.2862		g		05/26/2021 18:59	HPLC SOP-7	NRS	N/A	

Results as reported above relate only to samples as submitted, unless specifically noted otherwise.

NELSON ANALYTICAL LAB

120 York Street
Kennebunk, ME 04046
(207) 467-3478

ISO 17025:2017 Certification
ANAB Certificate Number AT-2169
Maine CDC Accreditation # MTF001
Office of Marijuana Policy MTF328

Amount Received:

REPORT OF ANALYSIS

Stoner & Co.

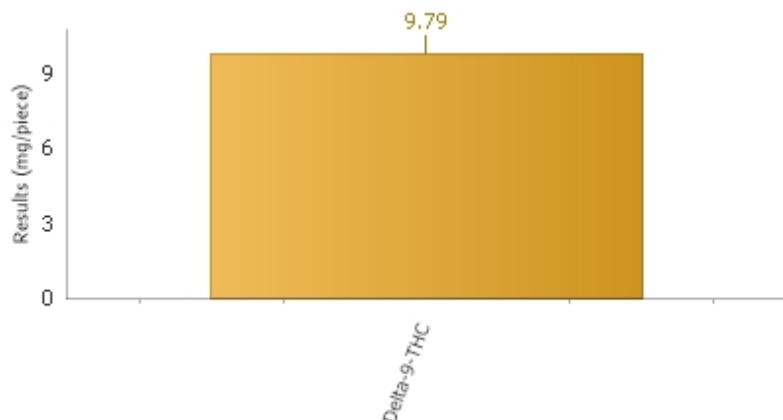
C21050452.06

Batch - 0005A - Milk Chai Truffle(Edible)

Date sampled : 05/25/2021

Reported Date: 05/28/2021

Temp Received:



Cannabinoids by HPLC

Analyte	Result	Reporting Limit	Units	Q	Analyzed	Method	Analyst	Pass/Fail Limit	Test Remarks
Cannabidiarin (CBDV)	ND	0.5	mg/piece		05/26/2021 19:19	HPLC SOP-7	NRS	N/A	
Cannabidiolic acid (CBDA)	ND	0.5	mg/piece		05/26/2021 19:19	HPLC SOP-7	NRS	N/A	
Cannabigerolic acid (CBGA)	ND	0.5	mg/piece		05/26/2021 19:19	HPLC SOP-7	NRS	N/A	
Cannabigerol (CBG)	ND	0.5	mg/piece		05/26/2021 19:19	HPLC SOP-7	NRS	N/A	
Cannabidiol (CBD)	ND	0.5	mg/piece		05/26/2021 19:19	HPLC SOP-7	NRS	N/A	
Tetrahydrocannabivarin (THCV)	ND	0.5	mg/piece		05/26/2021 19:19	HPLC SOP-7	NRS	N/A	
Cannabinol (CBN)	ND	0.5	mg/piece		05/26/2021 19:19	HPLC SOP-7	NRS	N/A	
Delta-9-THC	9.79	0.5	mg/piece		05/26/2021 19:19	HPLC SOP-7	NRS	N/A	
Delta-8-THC	ND	0.5	mg/piece		05/26/2021 19:19	HPLC SOP-7	NRS	N/A	
Cannabichromene (CBC)	ND	0.5	mg/piece		05/26/2021 19:19	HPLC SOP-7	NRS	N/A	
THCA-A	ND	0.5	mg/piece		05/26/2021 19:19	HPLC SOP-7	NRS	N/A	

Total Cannabinoids by HPLC (Calculated)

Analyte	Result	Reporting Limit	Units	Q	Analyzed	Method	Analyst	Pass/Fail Limit	Test Remarks
CBD+CBDA- Calculated	ND	0.5	mg/piece		05/26/2021 19:19	HPLC SOP-7	NRS	N/A	
Total CBD-(Max CBD) Calculated	ND	0.5	mg/piece		05/26/2021 19:19	HPLC SOP-7	NRS	N/A	
THC+THCA- Calculated	9.79	0.5	mg/piece		05/26/2021 19:19	HPLC SOP-7	NRS	N/A	
Total THC-(Max THC) Calculated	9.79	0.5	mg/piece		05/26/2021 19:19	HPLC SOP-7	NRS	N/A	
Total Cannabinoids- Calculated	9.79	0.5	mg/piece		05/26/2021 19:19	HPLC SOP-7	NRS	N/A	
Weight of edible submitted	10.2099		g		05/26/2021 19:19	HPLC SOP-7	NRS	N/A	

Results as reported above relate only to samples as submitted, unless specifically noted otherwise.

120 York Street
Kennebunk, ME 04043
(207)467-3478 or (207)618-9333

ANAB Certificate Number: AT-2169

www.Testedlabs.com

Notes and Definitions

Note: All sample results are based on samples as they are received. Not all potential/existing hazards were tested. Unless otherwise noted below, analyses were performed without significant modifications and QC met the quality standards outlined in the methods reported. For purposes of reporting the terms marijuana and cannabis are used interchangeably. The Pass/Fail column on the report references Maine Adult Use acceptance limits. The State of Maine does not require Medical Marijuana or Hemp to meet these acceptance limits currently.

Results for the Maine Adult Use program are entered into the Metrc system. Due to reporting requirements some results are entered in Metrc as Zero. This is not scientifically accurate. Please refer to the final pdf report for the accurate reporting information. The Total THC number listed on the report may not be the same number listed in the Metrc system. Delta 8, if found in the sample, is not reported in Metrc or as part on the Total THC in Metrc.

Heat activation of cannabis products converts THCA to THC and CBDA to CBD in a time and temperature dependent manner. This conversion is known as decarboxylation and results from the loss of CO₂ during heating.

Total THC (Max THC) = Delta 8 THC + Delta 9 THC + (THCA x 0.877)

Total CBD (Max CBD) = CBD + (CBDA x 0.880)

Nelson Analytical is accredited for testing by ISO/IEC 17025:2017 and certified by ME CDC for the following parameters only:

Cannabinoids: Cannabinol (CBN), Cannabidiol (CBD)*, Cannabidiolic Acid (CBDA)*, Cannabigerol (CBG), Cannabigerolic Acid (CBGA), Cannabichromene (CBC), delta-9-THC*, delta-8-THC, THCA-A*, Tetrahydrocannabivarin (THCV), Cannabidivarin (CBDV) by High Pressure Liquid Chromatography (HPLC). Internal SOP-1/SOP-7 Analysis of Cannabinoids *NOTE: ME CDC certification for CBD, CBDA, Delta 9 THC and THCA-A, Total THC and Total CBD.

Homogeneity (Internal SOP-1/SOP-7 Analysis of Cannabinoids)

Visual Inspection - Foreign Material Testing (Internal SOP-24-Visual Inspection)

% Moisture (Loss on drying) (Internal SOP 59 - % Moisture)

Metals Preparation and Analysis: Arsenic, Cadmium, Lead and Mercury (SOP-17- ICP MS based on EPA 200.8)

Mycotoxins: Total Aflatoxin and Ochratoxin by ELISA - Internal SOP-4 Total Aflatoxin and Ochratoxin

Yeast and Mold (based on AOAC Method 997.02/2014.05), Total Coliform and E. coli (based on AOAC Method 991.14) E. Coli P/A (based on AOAC 991.14 Modified with enrichment before plating), Aerobic Plate Count (based on AOAC Method 990.12), Enterobacteriaceae (based on OMA 2003.01), Salmonella (based on AOAC 2014.01) SOP-3-Microbiological analysis by Petri Film.

Water Activity (SOP-53-Water Activity-based on ASTM D81918)

< or ND - Analyte result not detected above the method reporting limit

All sample results are reported on an "as received" basis.

Edibles are reported in mg/serving. The serving size is defined by the customer for Adult Use testing.

If the serving size is not defined by the customer (for R&D or Medical testing), the number reported is based on the weight of one unit of the product or as defined on the customer label.

The mg/serving reported are based on weights of the serving size taken at the laboratory. The mg/package results reported are based on information supplied by the customer.

Edible conversion calculation: mg/g in serving x weight of serving = mg per serving

Mg/package conversion: mg/serving x servings per package = mg/package

Laboratory uncertainty is calculated and updated on a regular basis.

The uncertainty calculated for edibles is applied to the Total THC results for Maine Adult use marijuana products. The uncertainty value currently in use is 10 mg per serving +/- 0.5 mg/serving based on uncertainty data calculated through August 2020.

The uncertainty calculated for Total THC in hemp is 0.30% +/- 0.05%. The uncertainty is based on data calculated through August 2020.

Samples are extracted and analyzed on the same day unless otherwise noted.

Cannabinoid and Terpene Analysis are based on laboratory developed methods. All other test methods are based on established EPA, USP or FDA methods.

Matrix matched quality control check samples for marijuana are available for microbiological analysis in a hemp-based QC. Other matrix matched quality control samples for most matrices may be available for hemp but do not currently exist in marijuana. Due to this unavailability, even ISO/IEC validated methods cannot be fully verified for the efficiency and accuracy of the marijuana extraction and analysis in any current Maine Testing facility.

To convert mg/ml to a % percentage move the decimal place one to the left.

Results as reported above relate only to samples as submitted, unless specifically noted otherwise.

Medical Marijuana and Hemp are not currently regulated in the State of Maine. For your reference, the limits listed in the rules for Maine Adult Use Testing as specified by the Maine Office of Marijuana Policy testing are listed below.

Water Activity and Moisture Content

If the water activity in a dried flower production batch sample is at or below, 0.65 A_w , the sample will be designated with “pass”. If the water activity in a dried flower production batch sample greater than 0.65 A_w , the sample will be designated with “fail”.

If the water activity in solid and semi-solid edible marijuana products that do not require additional preservation (e.g. refrigeration) is at, or below, 0.85 A_w , the sample will be designated with “pass”. If the water activity is greater than 0.85 A_w , the sample will be designated as “fail”.

Visual Inspection for Filth and Foreign Material

The samples shall not pass if any living or dead insect, at any life cycle stage; one hair; or one count of mammalian excreta is found or if one fourth of the total area is covered by mold, sand, soil, cinders, dirt or imbedded foreign material.

Homogeneity of cannabinoids

Total THC and, if applicable, Total CBD values between samples must not vary by more than 15% or the product fails testing.

THC per serving and per package

The concentration in any marijuana product may not exceed 10 milligrams per serving of THC.

The concentration in any marijuana may not exceed 100 milligrams per package of Total THC.

Microbiological Contaminants in CFU/g

Marijuana Material	Total Viable Aerobic Bacteria	Total Yeast and Mold	Total Coliform Bacteria	Enterobacteriaceae	E. coli and Salmonella (spp.)
Unprocessed and Processed Plant Material and Marijuana Products	100,000	10,000	1000	1000	<1/g sample (pass)
CO ₂ and Solvent-Based Extracts	10,000	1000	100	100	<1/g sample (pass)

Heavy Metals testing

Note: Heavy Metals tests are not included in the required analysis at this time. The limits below are listed for reference if voluntary testing is performed.

Heavy Metal	Inhalation	Ingestion or Suppository	Topical Application
Cadmium (Cd)	200 ug/kg	500 ug/kg	5000 ug/kg
Lead (Pb)	500 ug/kg	500 ug/kg	10,000 ug/kg
Arsenic (As)	200 ug/kg	1500 ug/kg	1000 ug/kg
Mercury (Hg)	100 ug/kg	3000 ug/kg	1000 ug/kg

Note: Residual Solvent and Pesticide limits are listed in the Adult Use testing rule from the Office of Marijuana Policy. These tests are not included in the required analysis at this time.

QUALIFIER DEFINITION

NELSON ANALYTICAL LAB

120 York Street, Kennebunk, ME 04043

www.nelsonanalytical.com

(207)467-3478 phone

REPORT OF ANALYSIS

Laboratory ID: C21050452

NH ELAP Accreditation #NH2018

Maine State Certification # ME00015

Maine Radon Certification # ME17500

Qualifier Definition



Notes: mg/L=ppm; ug/L=ppb; ng/L=ppt; "<" denotes "less than". This report of analysis may not be modified in any way, or reproduced except in full, without written approval from Nelson Analytical, LLC. Results reported above relate only to samples as submitted, unless specifically noted otherwise. Nelson Analytical, LLC is currently accredited by the New Hampshire Environmental Lab Accreditation Program, ANAB, and the Maine Laboratory Accreditation Program. For a list of current accredited tests, please visit the websites listed below. Sampling performed by the lab is according to the lab document "Water Sampling Instructions". EPA standards list pH & Chlorine as field parameters which should be tested immediately upon sample collection. Samples tested for pH after submission are beyond the hold time. Samples will be analyzed as quickly as laboratory operations allow. Metals samples preserved and analyzed on the same day do not meet the method criteria. #=Sample(s) received at laboratory do not meet method specified temperature criteria.

Subcontract Laboratories: SUB1: Nelson Analytical Manchester (NH1005) ME-NH01005 SUB 2: (NH 2136) (ME-CT00007), SUB3: (NH2001) (ME00019), SUB 4: NH2073 SUB5: (NH2530) (ME FL00117), SUB7: EAI Analytical (NH 1007), SUB 8: ME00002 SUB9: (NH2516) (MA00100)

<http://des.nh.gov/organization/divisions/water/dwgb/nhelap/>
<https://www.maine.gov/dhhs/mecdc/environmental-health/dwp/professionals/labCert.shtml>
http://search.anab.org/public/organization_files/Tested-LabsNelson-Analytical-Cert-and-Scope-File-08-13-2019_1565710045.pdf

Date: 05/28/2021 16:08